



Brandle Guide

Your own accounting software, without the development cost



What's inside?

- 03 Introduction to Pandle
- 05 What is Brandle?
- 06 Managing your clients' accounts
- 08 Brand Customisation
- 10 Learn more about Brandle
- 11 Upcoming development

Ever thought about having your own accounting software, but were put off by the cost of development?

Well, there is another way.



Introduction to Pandle

Pandle is refreshingly simple bookkeeping software designed specifically for small business owners, freelancers and accountants in the UK.

Our intuitive and easy to use cloud accounting software has helped over 30,000 businesses in the UK to become brilliant bookkeepers. Simple to use, yet comprehensive in its capabilities Pandle removes the stress of bookkeeping by streamlining every process.



Pandle has all the features your clients need to ensure their bookkeeping is accurate, organised and efficient.

These include:

- ✓ Bank feeds
- ✓ Receipt uploads
- ✓ Quotes & invoicing
- ✓ Projects
- ✓ A mobile app
- ✓ VAT submissions
- ✓ User permissions
- ✓ Unlimited users
- ✓ PayPal/Stripe feeds
- ✓ Payment reminders
- ✓ Bank rules
- ✓ Recurring transactions

Pandle is also a HMRC recognised software supplier supporting MTD for VAT.



Reducing errors in your clients' bookkeeping

We believe that simplicity is the best way to reduce your clients' bookkeeping errors.

Pandle hides functions which are not relevant to a user's business, leading to a cleaner and simpler user interface.

Pandle replaces 'accounting jargon' with terms your clients will find easier to understand.

Pandle makes every process as intuitive as possible. For example, instead of entering wage journals, a user enters single entry 'wage adjustments', then Pandle completes the double entries on their behalf.

Pandle also actively works to reduce the number of errors in your clients' bookkeeping through employing a range of real time warning notifications, preventative measures and machine learning algorithms.

Check out our [Error Reduction in Pandle](#) guide to learn about how these measures help to prevent those weird and wonderful bookkeeping entries, which you are then left to fix!



What is Brandle?

Brandle offers bookkeepers, accountants and other partners the option to use Pandle Pro as a basis for their very own cloud accounting software.

Pandle is the only cloud accounting provider that offers this unique white labeling service.

Absolutely no reference to Pandle will ever be seen by your clients, so as far as they're concerned it's your firm's software.

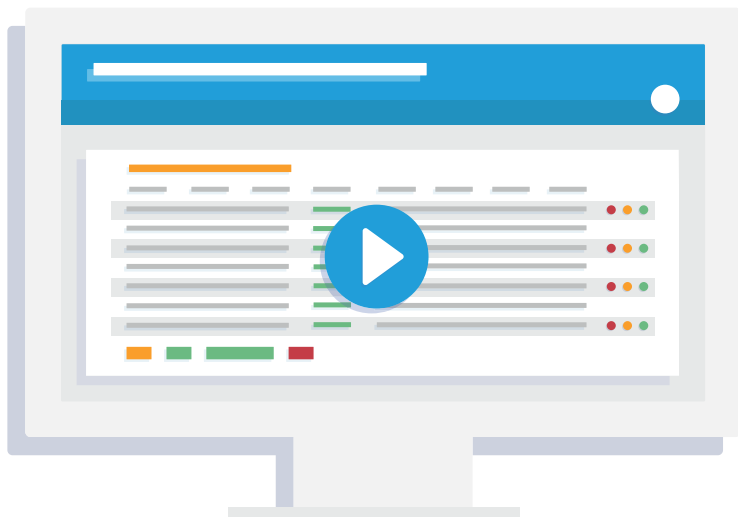
Having your own software will enhance your brand whilst adding credibility and value to your business, making you stand out among your competitors.



Managing your clients' accounts

With your Brandle account you will be able to switch seamlessly between your clients, set up accounts on their behalf, or invite them to create their own account and give you access.

Watch this short video to see just how easy it is to manage your client's accounts:



Brandle gives you a much closer working relationship with your clients, vastly reducing the amount of errors which need to be corrected when accounts are submitted.





How your software could look

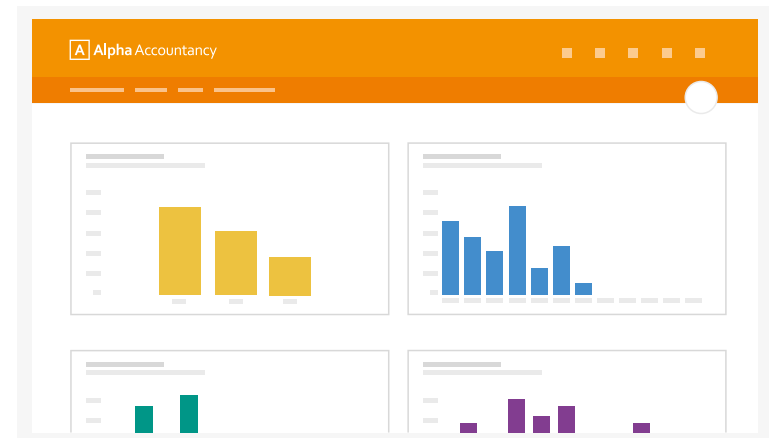
The easiest way to explain how Brandle can be tailored to your firm is to show you.

Let's take an example firm of accountants called Alpha Accountancy. Here is our logo for Alpha Accountancy which we will use as a basis for the brand customisations:



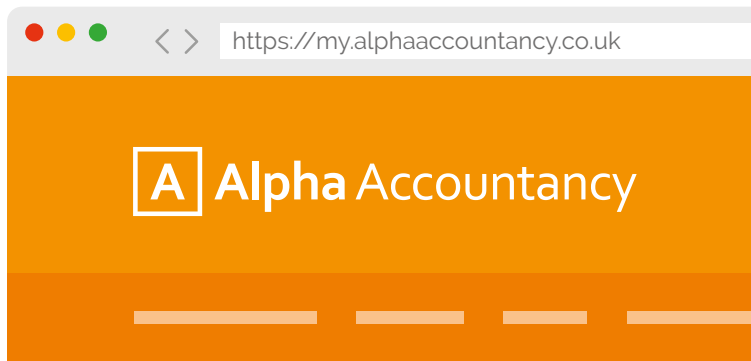
Brand customisation

Here is an example of how we will tailor the logo, imagery and colour scheme throughout the software for Alpha Accountancy.



Domain customisation

Here is an example of the URL where Alpha Accountancy's software would be hosted:



Content customisation

As your software is completely separate from Pandle you can add or edit any content.

This means you can customise the messaging throughout the entire application, from menus and labels, to all help content. If you think your customers are more used to the term 'Nominal Ledger' than 'Categories', then we can change it for you.

Future developments

General improvements and updates are free of charge. Your own version will still benefit from the same care and attention we give to Pandle, which means when we release new features you will get them too!

If you have a bespoke requirement, we can develop it for you. You won't find this with any other provider on the market! If your requests are of general benefit to Pandle, we'll develop them for free. If not, then we'll provide a quote for the work.



Pricing

With Brandle you will be able to switch seamlessly between your clients, set up accounts on their behalf, or invite them to create their own account and give you access.

Brandle will allow you to work simultaneously in real time on your client's accounts. Giving you a much closer working relationship and vastly reducing the amount of errors which need to be corrected when accounts are submitted.

Set up time	2-3 weeks
Set up fee	£1,500 + VAT
Monthly fee	£2.50 + VAT per business*

*minimum of 20 businesses

If you would also like to offer our Pandle Mobile app to your clients there is an additional set up fee of £1,500 + VAT.

Pandle is the only cloud accounting provider that offers this unique white labelling service. Absolutely no reference to Pandle will ever be seen by your clients, so as far as they're concerned it's your firm's software.



Learning more about Brandle

If you're interested in Brandle we would love to give you a live demonstration of how we can tailor the software to meet your needs.

1

Head to pandle.com/brandle-demo-registration/

2

Enter your details in seconds to register

3

Tell us how we can customise the software for your needs



The live demo will enable you to see how your version software could differ from Pandle.

Once you've completed the live demo you can use the test environment for as long as you wish, with absolutely no obligation to sign up.



Upcoming developments for Pandle Partners

We're developing a range of different reports which will provide greater insight into your clients' accounts.

Such as...

- ✓ Login frequency
- ✓ Inter-Pandle invoicing
- ✓ Data entry errors
- ✓ Client demographics
- ✓ Accounts deadlines
- ✓ Return due dates

Bespoke reporting can also be requested by Pandle Partners.

Support from Pandle

If you have any further questions about partnering with Pandle please don't hesitate to contact us.

☎ 0203 393 7434

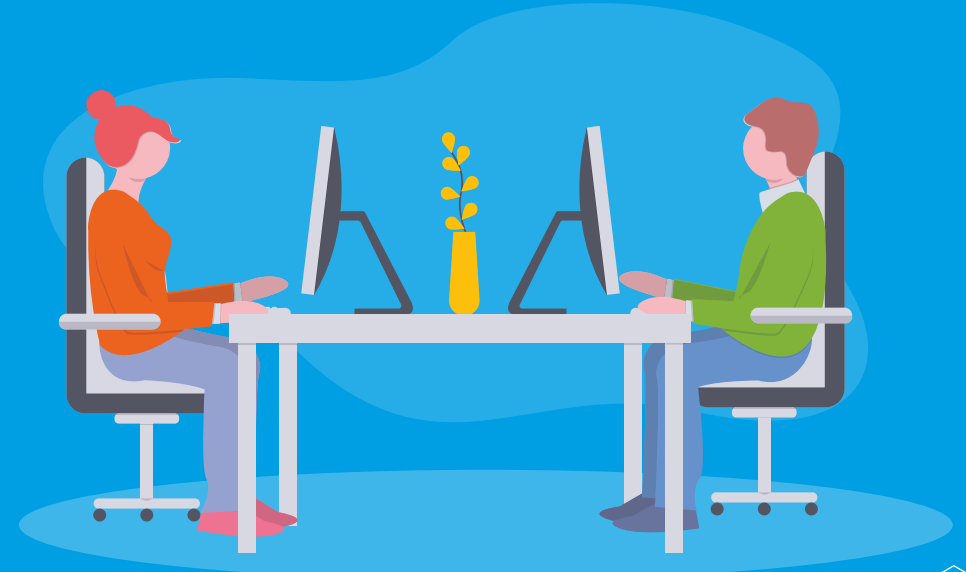
✉ sales@pandle.com

🏠 www.pandle.com

We have made every effort to ensure Pandle is as easy as possible to use, but every now and then your clients may need a little extra help!

Which is why we have created a dedicated help centre where they can access how to guides, live chat support, FAQs and tutorial videos.

Your clients will never be short of ways to find the answer they are looking!





Head Office

Suite 1, 5th Floor, City Reach.
5 Greenwich View Place,
London, E14 9NN

 0203 393 7434

 sales@pandle.com

 www.pandle.com